



87 Marten Road, London, E17 4NL

Offers in excess of £1,000,000

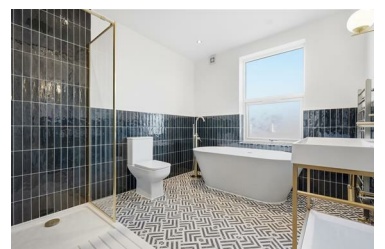


A beautifully presented and fully refurbished four-bedroom Victorian terrace located right next to Lloyd Park. Externally, the home boasts an attractive brick frontage complemented by elegant dark sash windows, setting the tone for the quality found within.

Inside, the property has been thoughtfully refurbished throughout, featuring stunning wooden herringbone flooring that flows seamlessly across the ground floor. The bay-fronted reception room is rich in character, showcasing a striking cast iron fireplace and exquisite detailed wall paneling.

To the rear, the home has been extended to provide a superb open-plan kitchen and dining area. The brand-new shaker-style kitchen is finished to a high standard with integrated appliances, quartz worktops and a gas hob. A large skylight floods the space with natural light, while Crittall-style folding doors open directly onto the garden. A convenient downstairs W/C completes the ground floor.

The first floor comprises two generous double bedrooms, with the principal bedroom at the front benefiting from built-in wardrobes. To the rear is a luxurious family bathroom, beautifully designed with a freestanding bathtub, walk-in shower with brushed chrome fittings, tiled flooring and classic



- Four Bedroom Mid Terrace House
- Open Plan Kitchen/Diner
- No Onward Chain
- Easy Access To Walthamstow Central Station
- Close Proximity To Lloyd Park
- Recently Renovated Throughout
- Garden Studio
- 1368 Sq Ft (127 SQ M)

